

COTTON



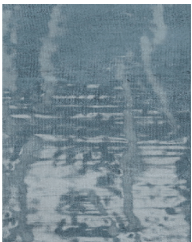
CONCRETE



MUD

SAND/  
SUNFLOWER

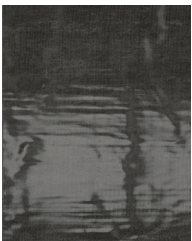
OCEAN



PINE GREEN



CARBON



# COVENTRY TILE

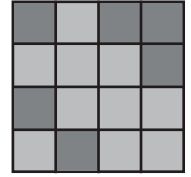
Italian Porcelain

3x16, 2x3 Hexagon Mosaic, 12x24 Modernist,  
2x2 Mosaic, 12x24, 3x24 Bullnose

AMERICA

## SHADE VARIATION

V2 - Slight Variation  
Clearly distinguishable differences in texture and/or pattern  
within similar colors.



## WEAR CODE

Coventry 12x24, Modernist, Hexagons and  
2x2s are rated (5) for all residential and commercial applications.  
Coventry 3x16 is rated (1) for walls only.

## PERFORMANCE DATA

THICKNESS: 8.50 mm

| Characteristics:                            | Norms:       | Results               |
|---|--------------|-----------------------|
| Water Absorption                            | ISO 10545-3  | 0.10%                 |
| Deep Abrasion                               | ISO 10545-6  | 135 mm <sup>3</sup>   |
| Breaking Strength                           | ISO 10545-4  | ≥ 35N/mm <sup>2</sup> |
| Dynamic Coefficient of Friction Wet         | AcuTest      | ≥ 0.42                |
| Dimensions Range                            | ISO 10545-2  | Conforms              |
| Frost Resistance                            | ISO 10545-12 | Frost Proof           |
| Chemical Resistance-<br>Household Chemicals | ISO 10545-13 | Min. Class GB         |
| Thermal Shock Resistance                    | ISO 10545-9  | Resists               |
| Resistance to Stains                        | ISO 10545-14 | Min. Class 3          |

## Notes:

Per ANSI standard A108.02,4.3.82, joints on tiles longer than 15" should not be staggered more than 1/3 the length of the tile. Always inspect materials prior to installations. Always mix 2-3 cartons at a time while installing to insure the best blend.

Book An  
Appointment



www.tileamerica.com